

FD320

LOVOL

BULLDOZER SERIES

ENGINE MODEL	CUMMINS QSNT-C345S31
GROSS POWER	257KW(350HP)@2000rpm
OPERATING WEIGHT	34500KG



LOVOL CONSTRUCTION MACHINERY CO., LTD.
ADDRESS: No. 75, Huanghe East Road, Huangdao District, Qingdao City, Shandong Province, China.
TEL: +86-532-86907190
EMAIL: lovol_overseas@global.lovol.com WEB: en.lovol.com

FD320 TECHNICAL PARAMETERS

BULLDOZER SERIES

LOVOL

ENGINE	FD320	FD320C	FD320D	FD320R	FD320W
Engine	Cummins QSNT-C345S31				
Emission	China-III				
Rated revolution	2000rpm				
Gross power	257kW(350hp)@2000rpm				
Net power	235kW(320hp)@2000rpm				
Number of cylinder-bore×stroke	6-140X152mm				
Displacement	14.01L				
Max. torque	1509N.m@1400rpm				
Cooling system	Mechanic fan				

DRIVE SYSTEM	FD320	FD320C	FD320D	FD320R	FD320W
Drive system	Manufactured by LOVOL, with high working efficiency, low breakdown rate; torqflow transmission, 3 gears forward and 3 gears backward.				
Traveling speed	Forward	F1:3.6km/h	F2:6.6km/h	F3:11.5km/h	
	Backward	R1:4.4km/h	R2:7.8km/h	R3:13.5km/h	
Max. theoretical traction force	318.2kN				
Torque converter	3-element, single stage, 1-phase				
Transmission	Planetary gear and torqflow transmission hydraulically actuated, forced lubrication				
Central drive	Spiral bevel gear, single-stage speed reduction, splash lubrication				
Steering clutch	Wet multiple disc, disc spring loaded, hydraulically actuated, hand operated, interconnected with steering brake.				
Brake clutch	Wet, contracting band, foot operated with hydraulic booster				
Final drive	Spur gear, double reduction, splash lubrication				

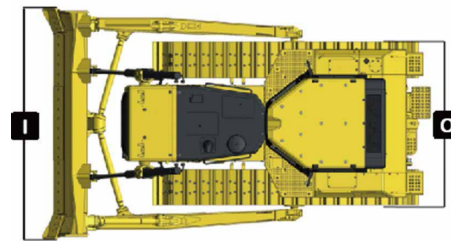
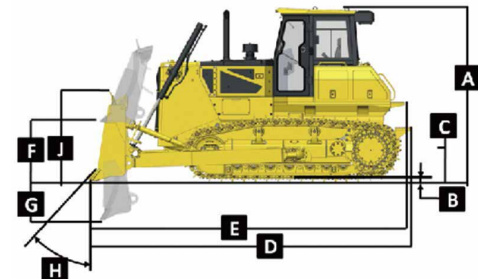
CHASSIS SYSTEM	FD320	FD320C	FD320D	FD320R	FD320W
Type	Swing type of sprayed beam, suspended structure of equalizer bar				
Track shoe type	Single grouser				
Track gauge	2140mm				
Width of track shoe	560/610/660/710mm				560mm (heavy duty)
Track grounding length	3150mm				
Track grounding area	35280/38430/41580/44730cm ²				35280cm ²
Number of track shoe	41 pcs/side				
Grounding pressure (standard configuration)	81.7kPa	82.3kPa	82.9kPa	85.6kPa	84.1kPa
Number of carrier roller	2 pcs/side				
Number of track roller	7pcs/side				
Pitch	228.6mm				

VOLUME	FD320	FD320C	FD320D	FD320R	FD320W
Fuel capacity	640L				
Coolant liquid capacity	79L				
Engine oil capacity	45L				
Hydraulic oil tank	97L				
Transmission	185L				
Final drive	55L/side				

OPERATING WEIGHT	FD320	FD320C	FD320D	FD320R	FD320W
Operating weight (standard)	34500kg	34150kg	34150kg	35230kg	35000kg

BLADE	FD320	FD320C	FD320D	FD320R	FD320W
Blade type	Straight-tilt /Angle/ Semi-U	Coal-U	Straight-tilt /Angle/ Semi-U	Waste handing blade	Straight-tilt /Angle/ Semi-U
Blade capacity	7.2/4.8/9m ³	12.1	7.2/4.8/9m ³	18.3m ³	7.2/4.8/9m ³

DIMENSION	FD320	FD320C	FD320D	FD320R	FD320W
A Machine height (without ROPS)	3760mm				
B Track grouser height	80mm				
C Ground clearance	500mm				
D Machine length (without draw bar)	6276mm				
E Machine length (with draw bar)	6610mm				
F Max. lifting height of blade	1560/1703/1560mm	1560mm	1560/1703/1560mm	1560mm	1560/1703/1560mm
G Max. digging depth of blade	560/630/560mm	560mm	560/630/560mm	560mm	560/630/560mm
H Digging angle of blade	55°±3°(deg.)				
I Blade width	4130/5000/4130mm	4806mm	4130/5000/4130mm	4502mm	4130/5000/4130mm
J Blade height	1590/1140/1710mm	1710mm	1590/1140/1710mm	2314mm	1590/1140/1710mm
O Width from end of left track shoe to end of right track shoe (standard)	2700mm				



PARAMETER OF RIPPER		
Type	Three-shank ripper	Single shank ripper
Weight	4954kg	4404kg
Q Max. ripping depth	842mm	1250mm
R Max. lifting height	883mm	955mm
S Ripper length (at deepest ripping)	2467mm	2855mm
T Ripper width	2420mm	1186mm
U Departure angle (at highest lifting)	34.5°	34.3°
V Ripping width	2240mm	-
W Distance between ripper teeth	1120mm	-

