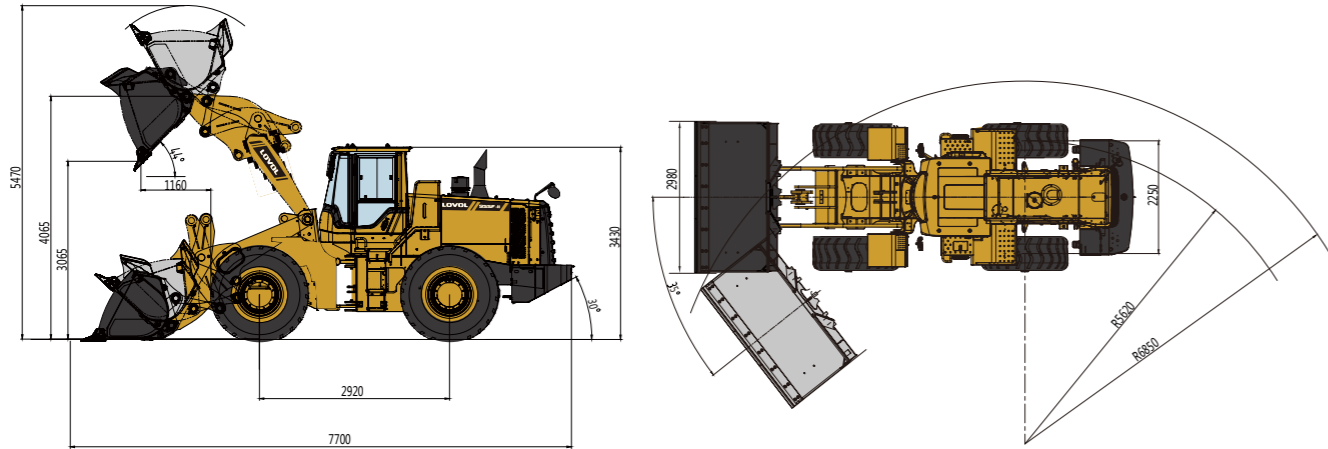


FL955F-II Wheel Loader Specifications



FL955F-II Dimensions



Item	Specifications
Rated Load	5000kg
Max. Traction Force	160kN
Max. Gradeability	30°
Max. Dump Clearance	3065mm
Dump Reach	1160mm
Wheel Tread	2250mm
Wheelbase	2920mm
Overall Dimension (L×W×H)	7700mm×2980mm×3430mm

Engine	
Emission Standard	Stage II
Number of Cylinder-Bore/Stroke	6-126°130
Max. Torque	980N·m
Rated Speed	2000rpm
Displacement	9.726L

Transmission System	
Torque Converter	Single stage two phase four element
Modulus of Converter	4.0
Transmission	Planetary powershift
Gear Shift	2 forward, 1 reverse
Max. Speed	42.0km/h

Front and Rear Axles	
Axles Type	Dry axles
Final Decelerate Type	Planetary reducer, spur cylindrical gear

Tyre	
Tyre Size	23.5-25
Ply	16
Front Tyre Pressure	0.30-0.32MPa
Rear Tyre Pressure	0.28-0.30MPa

Steering System	
Type	Double pump flow confluence, load-sensing hydraulic system
Steering Angle Each Direction	35°
Min. Turning Radius	5620mm

Hydraulic System	
Working Pressure	18MPa
Boom Lifting Time	5.6s
Total Cycle Time	10.2s

Brake System	
Service Brake	Air over hydraulic caliper disc brake
Park Brake	Manual brake

Service Refill Capacity	
Fuel Tank	270L
Hydraulic Tank	174L
Engine Oil	22L



LOVOL CONSTRUCTION MACHINERY GROUP CO., LTD.

Address: No. 75, Huanghe East Road, Huangdao District, Qingdao City, Shandong Province, China.

Website: en.lovol.com

Alibaba: lovolconstruction.en.alibaba.com

Facebook: Cons Lovol

E-mail: lovol_overseas@global.lovol.com

TEL: +86-532-86907190

As manufacturer, LOVOL has right to constantly upgrade and improve our products without informing to customers. The pictures in literatures are for reference only, the detailed specifications are subject to real products.

Engine Model

WEICHAI WD10G220E23

Rated Power

162kW

Operating Weight

16620kg

Bucket Capacity

3.0m³

Max. Breakout Force

175kN

FL955F-II

WHEEL LOADER



FLEXIBILITY

- Adopt medium wheelbase and front articulation design which have small turning radius, flexible operation & high efficiency features. It is more suitable for loose materials application.
- The bucket has an automatic leveling function which can directly load the material after landing and saving the bucket adjustment time.
- Multi-stage power hydraulic control system is perfectly matched with high-efficiency powertrain system that makes machine work fast and efficient.
- Low-effort joystick control system delivers high-efficiency operation with ease and fast.

RELIABILITY

- The electrical circuit adopts waterproof connector to ensure the electrical system work more reliable in harsh working conditions.
- Adopt world class engine which provides excellent service and part availability in market.
- Optimized layout of pipelines and dual-seal technology can avoid oil leakage and make hydraulic system more reliable.

ROBUSTNESS

- Reinforced front-articulated frame which has passed million times fatigue experimental test, 1,000 hours intensive experimental test and 5,000 hours jobsite test, it has been proved to be robust and durable.
- Adopt proven reinforced heavy duty axle which is more reliable and durable.
- Adopt integrated protection to protect caliper to increase axle's reliability.

COMFORT

- Adopt ergonomic design cab to provide broad space and comfortable operation. 360° flat view glass windows with wide vision, more beautiful and comfortable.
- Equip with adjustable steering column which is suitable for different operators to reduce labor intensity.
- High-back mechanical suspension seat with headrest could make operator feel more comfortable.

01 Engine



- Adopt low speed and high torque design WEICHAI WD10G220E23 engine. Oil-water separator has good filtration capacity and strong pollution tolerance to make oil cleaner. Adopt high radiating capacity aluminum plate radiator to make engine work normally under 50°C environment.

02 Transmission



- Adopt mature technology heavy duty planetary gearbox which has high-efficiency dual turbine torque converter to use engine much better. Power performance is increased by 10%.

03 Axles



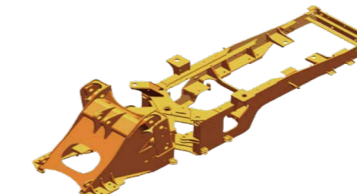
- Adopt reinforced heavy duty axle. Use four planet gears in the wheel hub and use new material for axle spiral bevel gear to make the axle more reliable and durable. Adopt integrated protective structure cover protect the axle caliper to increase reliability.

04 Cab



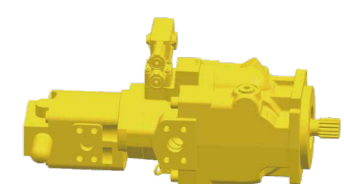
- Adopt ergonomic design cab to provide broad space and comfortable operation experience. Adopt 360° flat view glass windows to provide attractive and comfortable wide vision.

05 Frame and Articulation



- Adopt LOVOL patent front-articulated technology frame. Rigid limit the bearing movement space and the reliability increased by 50% than industry.

06 Hydraulic System



- Adopt LOVOL patent multi-valve to increase hydraulic system's performance and reliability.
- Effectively reduce multi-valve's leak, heat and block phenomenon and reduce heavy operation problem.

Attachments



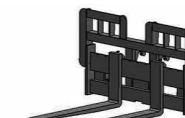
Larger Bucket



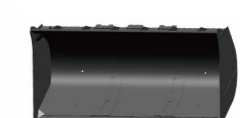
Log Grapple



Rock Bucket



Pallet Fork



Coal Bucket



Grass Grapple