

FD600

LOVOL

BULLDOZER SERIES

ENGINE MODEL	CUMMINS QSK19
GROSS POWER	450KW(604HP)@1800rpm
OPERATING WEIGHT	70630KG



LOVOL CONSTRUCTION MACHINERY CO., LTD.

ADDRESS: No. 75, Huanghe East Road, Huangdao District, Qingdao City, Shandong Province, China.

TEL: +86-532-86907190

EMAIL: lovol_overseas@global.lovol.com WEB: en.lovol.com

FD600 TECHNICAL PARAMETERS

BULLDOZER SERIES

LOVOL

ENGINE		FD600
Engine		Cummins QSK19
Emission		China-III
Rated revolution		1800rpm
Gross power		450kW(604hp)@1800rpm
Net power		438kW(588hp)@1800rpm
Number of cylinder-bore×stroke		6-159mm*159mm
Displacement		19L
Max. torque		3019N.m@1300rpm
Cooling system		Smart hydraulic control fan

DRIVE SYSTEM		FD600
Drive system		Torqflow transmission consists of a water-cooled, 3-element, 1-stage, 1-phase torque converter with lockup clutch and a planetary gear, multiple-disc clutch transmission which is hydraulically-actuated and force-lubricated for optimum heat dissipation. Gearshift lock lever and neutral safety switch help prevent accidental starts.
System overflow pressure		-
Traveling speed	Forward	0-3.8/0-6.8/0-11.8km/h
	Backward	0-5.1/0-9.2/0-15.8km/h
Max. theoretical traction force		588kN
Torque converter		3-element, 1-stage, 1-phase with lockup clutch
Transmission		Planetary gear, multiple-disc clutch, hydraulically actuated and force-lubricated
Steering clutch		Wet, multiple-disc steering clutches are spring-actuated loaded and hydraulically released.
Brake clutch		Wet, multiple-disc brakes are spring-actuated and hydraulically released.
Final drive		Primary spur gear + primary planetary reduction

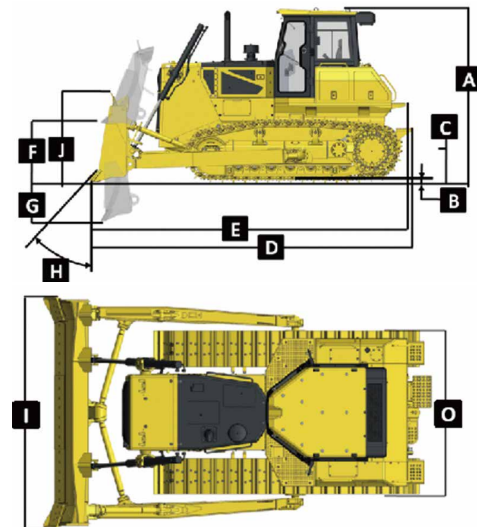
CHASSIS SYSTEM		FD600
Type		Oscillation with equalizer bar and forward mounted pivot shafts , unique K-type bogies
Track shoe type		Single grouser
Track gauge		2500mm
Width of track shoe		610/710/810mm
Track grounding length		3840mm
Track grounding area		46850cm ²
Number of track shoe		40pcs/single side
Grounding pressure (standard configuration)		130.2kPa
Number of carrier roller		2pcs/single side
Number of track roller		7pcs/single side
Pitch		280mm

VOLUME		FD600
Fuel capacity		1150L
Coolant liquid capacity		122L
Engine oil capacity		24L
Hydraulic oil tank (travel)		275L
Hydraulic oil tank (work)		246L
Final drive		61L/single side

OPERATING WEIGHT		FD600
Operating weight (standard)		70630kg

BLADE		FD600
Blade type		Semi-U blade(heavy duty)
Blade capacity		18.9m ³

DIMENSION		FD600
A	Machine height (without ROPS)	4370mm
B	Track grouser height	93mm
C	Ground clearance	610mm
D	Machine length (without draw bar)	10390mm
E	Machine length (with draw bar)	-
F	Max. lifting height of blade	1660mm
G	Max. digging depth of blade	715mm
H	Digging angle of blade	55°
I	Blade width	4690mm
J	Blade height	2250mm
O	Width from end of left track shoe to end of right track shoe (standard)	3110mm



PARAMETER OF RIPPER		FD600
Type		Single shank ripper
Weight		3946kg
Q	Max. ripping depth	1435mm
R	Max. lifting height	1105mm
S	Ripper length (at deepest ripping)	2928mm
	Ripper width	1600mm
	Departure angle (at highest lifting)	45.6°

